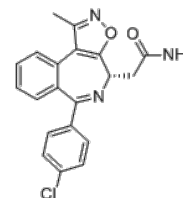


Product Name : CPI 0610
Cat. No. : PC-62282
CAS No. : 1845726-14-8
Molecular Formula : C₂₀H₁₆ClN₃O₂
Molecular Weight : 365.817
Target : Bromodomain
Solubility : 10 mM in DMSO



Biological Activity

CPI 0610 is a potent, selective, and cell-active **BET bromodomain** inhibitor with IC₅₀ of 39 nM for BRD4-BD1 in TR-FRET assay; shows remarkably selectivity, over the bromodomains of CBP, BRD9, BRPF1, PCAF, BRG1, ATAD2, TRIM24, BRD8; has an IC₅₀ of 0.18 μM in MYC RNA expression assay; demonstrates antitumor efficacy in an MV-4-11 mouse xenograft model.

References

- Albrecht BK, et al. *J Med Chem.* 2016 Feb 25;59(4):1330-9.
Siu KT, et al. *Leukemia.* 2017 Jan 3. doi: 10.1038/leu.2016.355.

Caution: Product has not been fully validated for medical applications. Lab Use Only!

E-mail: tech@probechem.com